

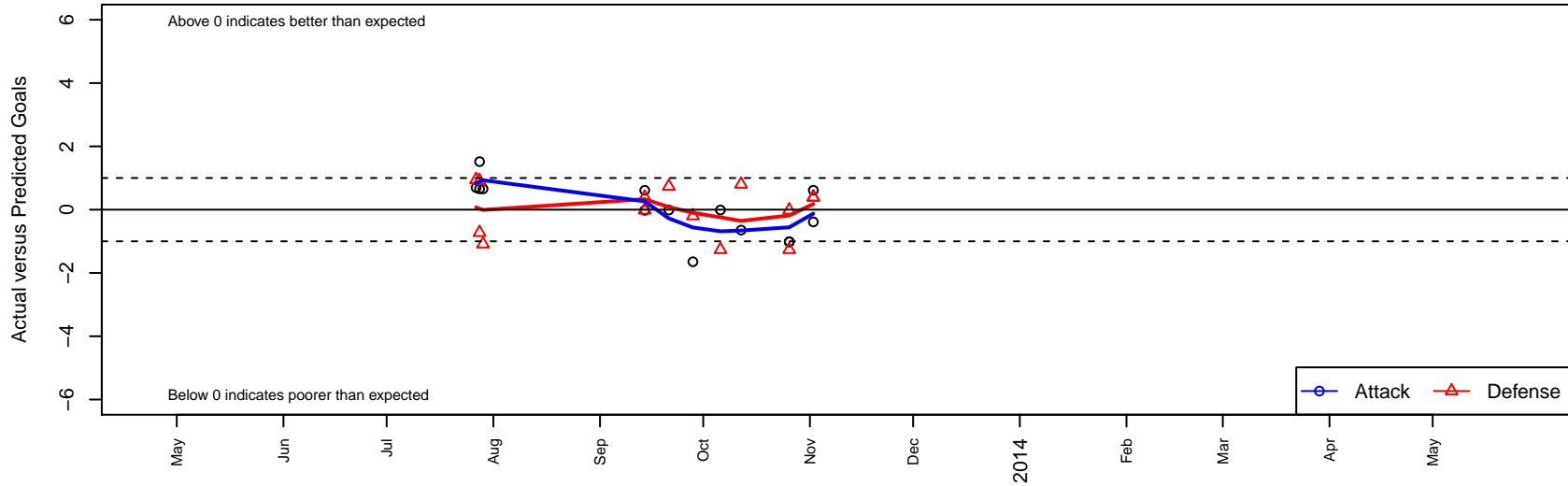
SSC Shadow Elite Sande G01

Spokane SC Shadow
 Spokane Valley, WA
 G01 total strength=500
 attack=0.37 defense=0.34
 fall league = DVI GU12 Umbro U12
 alt names used:
 SSC Shadow Elite Sande G01
 SSC SHADOW ELITE G01 SANDE

Venues played:
 River City Cup Girls U-12 Gold U12
 DVI GU12 Umbro U12



SSC Shadow Elite Sande G01
 Dots are actual minus expected GF (blue circles) and GA (red triangles).
 Blue line is smoothed change in attack strength. Red is smoothed change in defense strength.



	date	home		away		venue	pred.home	pred.aw
16	2013-11-02	Three Rivers SC Green G01	0	SSC Shadow Elite Sande G01	3	DVI GU12 Umbro U12	0.39	3.39
17	2013-11-02	Three Rivers SC Green G01	0	SSC Shadow Elite Sande G01	4	DVI GU12 Umbro U12	0.39	3.39
30	2013-10-26	SSC Shadow Elite Sande G01	0	SSC Shadow Elite Rennaker-Cooper G01	2	DVI GU12 Umbro U12	1.02	1.98
31	2013-10-26	SSC Shadow Elite Sande G01	0	SSC Shadow United Benjamin G01	3	DVI GU12 Umbro U12	1.01	1.74
17	2013-10-12	SSC Shadow Elite Sande G01	2	Missoula Strikers Black G01	0	DVI GU12 Umbro U12	2.65	0.80
30	2013-10-06	SSC Shadow United Benjamin G01	3	SSC Shadow Elite Sande G01	1	DVI GU12 Umbro U12	1.74	1.01
12	2013-09-28	Missoula Strikers Black G01	1	SSC Shadow Elite Sande G01	1	DVI GU12 Umbro U12	0.80	2.65
39	2013-09-21	SSC Shadow Elite Sande G01	1	SSC Shadow United Benjamin G01	1	DVI GU12 Umbro U12	1.01	1.74
73	2013-09-14	SSC Shadow Elite Sande G01	4	Three Rivers SC Green G01	0	DVI GU12 Umbro U12	3.39	0.39
75	2013-09-14	SSC Shadow Elite Rennaker-Cooper G01	2	SSC Shadow Elite Sande G01	1	DVI GU12 Umbro U12	1.98	1.02
36	2013-07-29	Spokane Foxes Platinum G01	6	SSC Shadow Elite Sande G01	1	River City Cup Girls U-12 Gold U12	4.91	0.34
19	2013-07-28	SSC Shadow Elite Sande G01	4	Spokane Scotties Riverside G01	2	River City Cup Girls U-12 Gold U12	2.48	1.28
30	2013-07-28	Spokane Foxes Platinum G01	4	SSC Shadow Elite Sande G01	1	River City Cup Girls U-12 Gold U12	4.91	0.34
17	2013-07-27	SSC Shadow Elite Sande G01	2	FC Spokane Black G01	0	River City Cup Girls U-12 Gold U12	1.30	0.95